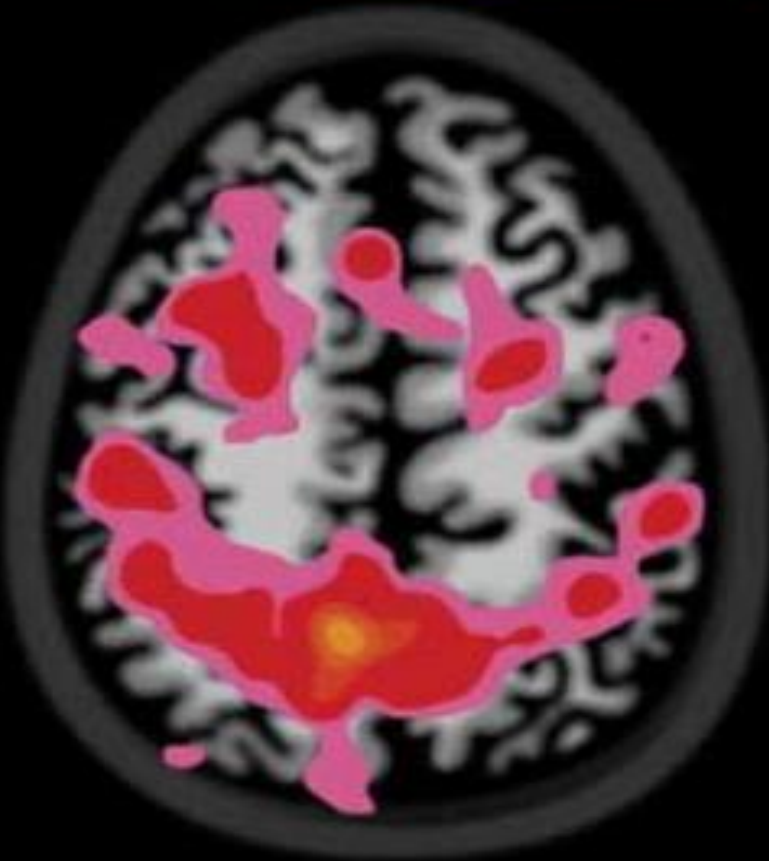
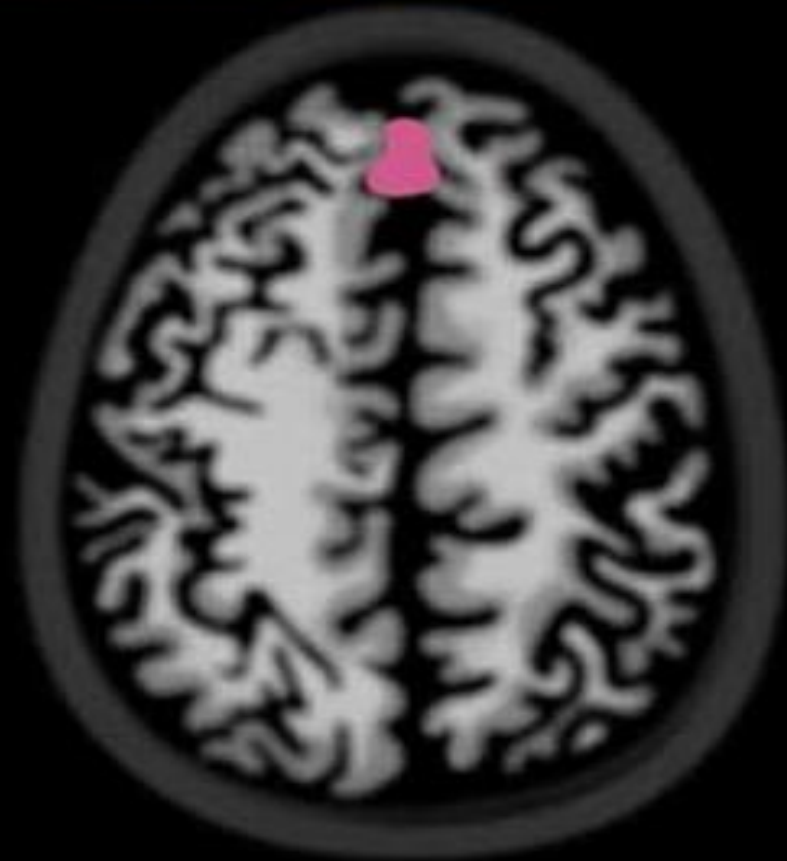


WHICH BRAIN DO YOU CHOOSE?

The Effects of Heavy Drinking on the Teen Brain



15 Year-old Non-Drinker



15 Year-old Heavy Drinker

Functional MRI scans of two teens while they took a working memory test. The images show that the heavy drinker isn't using those brain areas normally used to complete a memory test, while the non-drinker is. Researchers suggest that in school, heavy drinkers may not be activating those regions of the brain required to remember a lesson.